

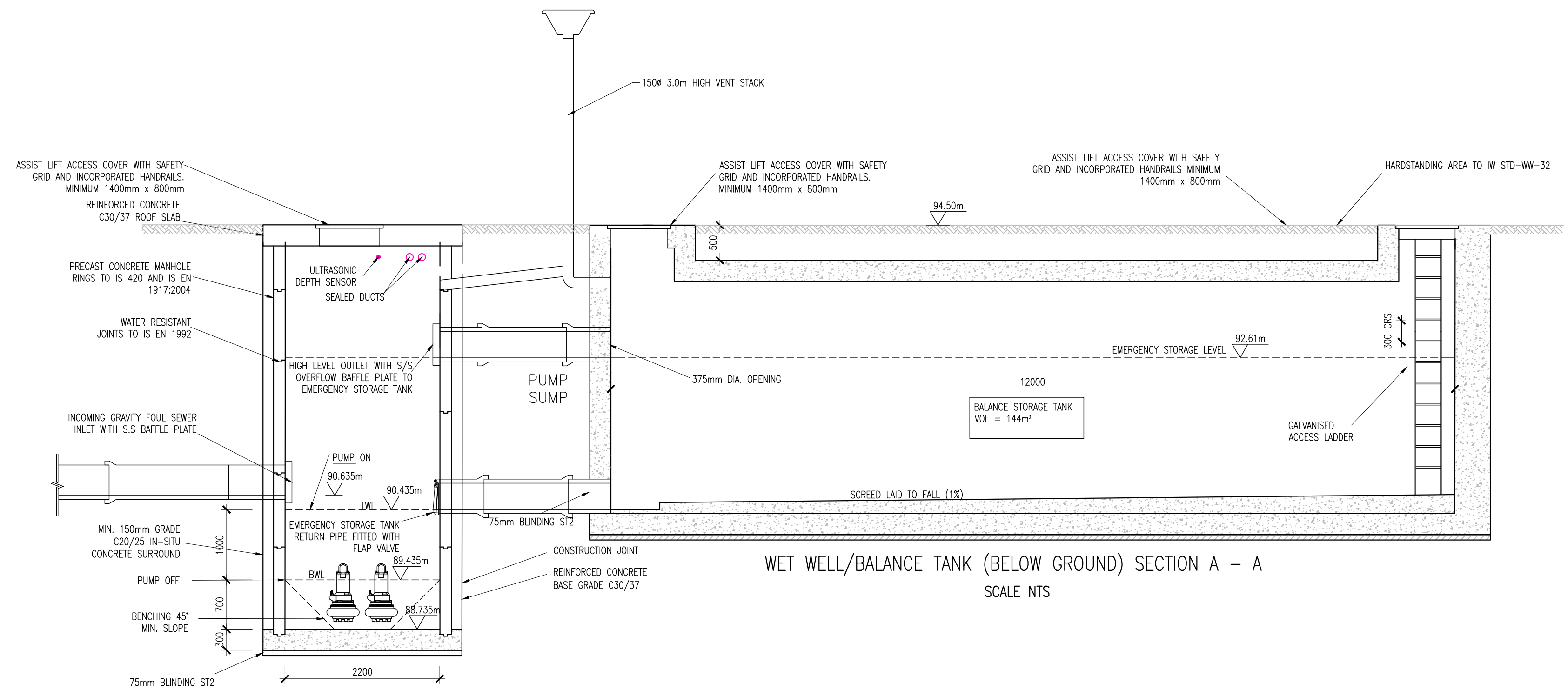
© COPYRIGHT OF THIS DRAWING IS RESERVED BY DBFL CONSULTING ENGINEERS. NO PART SHALL BE REPRODUCED OR TRANSMITTED WITHOUT THEIR WRITTEN PERMISSION.

NO CHANGES OF WHATSOEVER NATURE ARE TO BE MADE TO ANY DETAILS SET OUT OR CONTAINED IN ANY DBFL SPECIFICATIONS OR DRAWINGS UNLESS THE EXPRESS CONSENT HAS BEEN OBTAINED IN ADVANCE, IN WRITING, FROM DBFL.

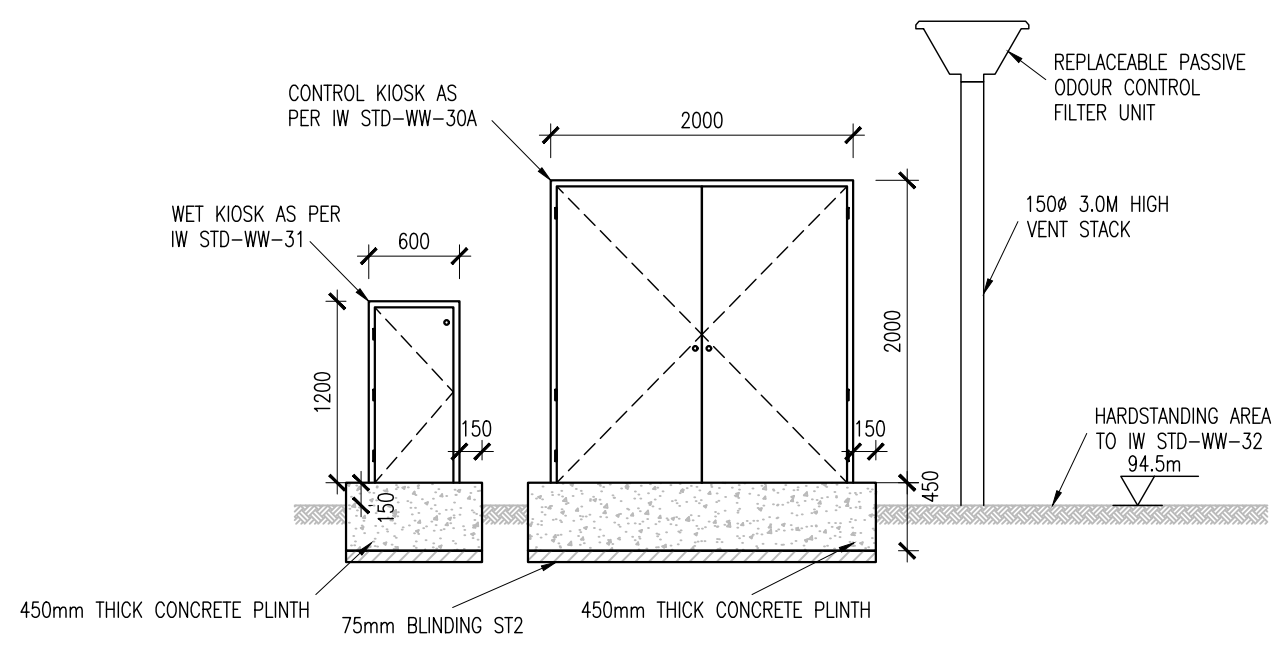
NOTES:

- GENERAL NOTES:
- ALL WORKS SHALL BE CONSTRUCTED IN ACCORDANCE WITH THE TII SPECIFICATION FOR ROADWORKS AND THE LOCAL AUTHORITY.
 - ALL DIMENSIONS ARE IN METRES UNLESS SPECIFIED OTHERWISE.
 - ALL COORDINATES ARE TO THE ITM (IRISH TRANSVERSE MERCATOR) GEOGRAPHIC COORDINATE SYSTEM.
 - ALL LEVELS ARE TO ORDINANCE DATUM IRELAND (MALIN HEAD).
 - ALL TEMPORARY TRAFFIC MANAGEMENT SHALL COMPLY WITH CHAPTER 8 OF THE TRAFFIC SIGNS MANUAL.
 - ALL MATERIAL DISPOSED OFF SITE SHALL BE TAKEN TO A LICENSED FACILITY APPROVED BY THE LOCAL AUTHORITY.
 - ALL AGGREGATES PROPOSED FOR USE ON THIS SCHEME SHALL MEET FULLY THE REQUIREMENTS OF THE CONTRACT SPECIFICATION AND, IN ADDITION, THE REQUIREMENTS STATED IN STANDARD RECOMMENDATION SR 21:2014 - GUIDANCE ON THE USE OF IS EN 13242 + A1:2007 - AGGREGATES FOR UNBOUND AND HYDRAULICALLY BOUND MATERIALS FOR USE IN CIVIL ENGINEERING WORK AND ROAD CONSTRUCTION. FURTHER DETAILS IS PROVIDED IN ADDITIONAL CLAUSE 14.4.4R OF THE CONTRACT SPECIFICATION.

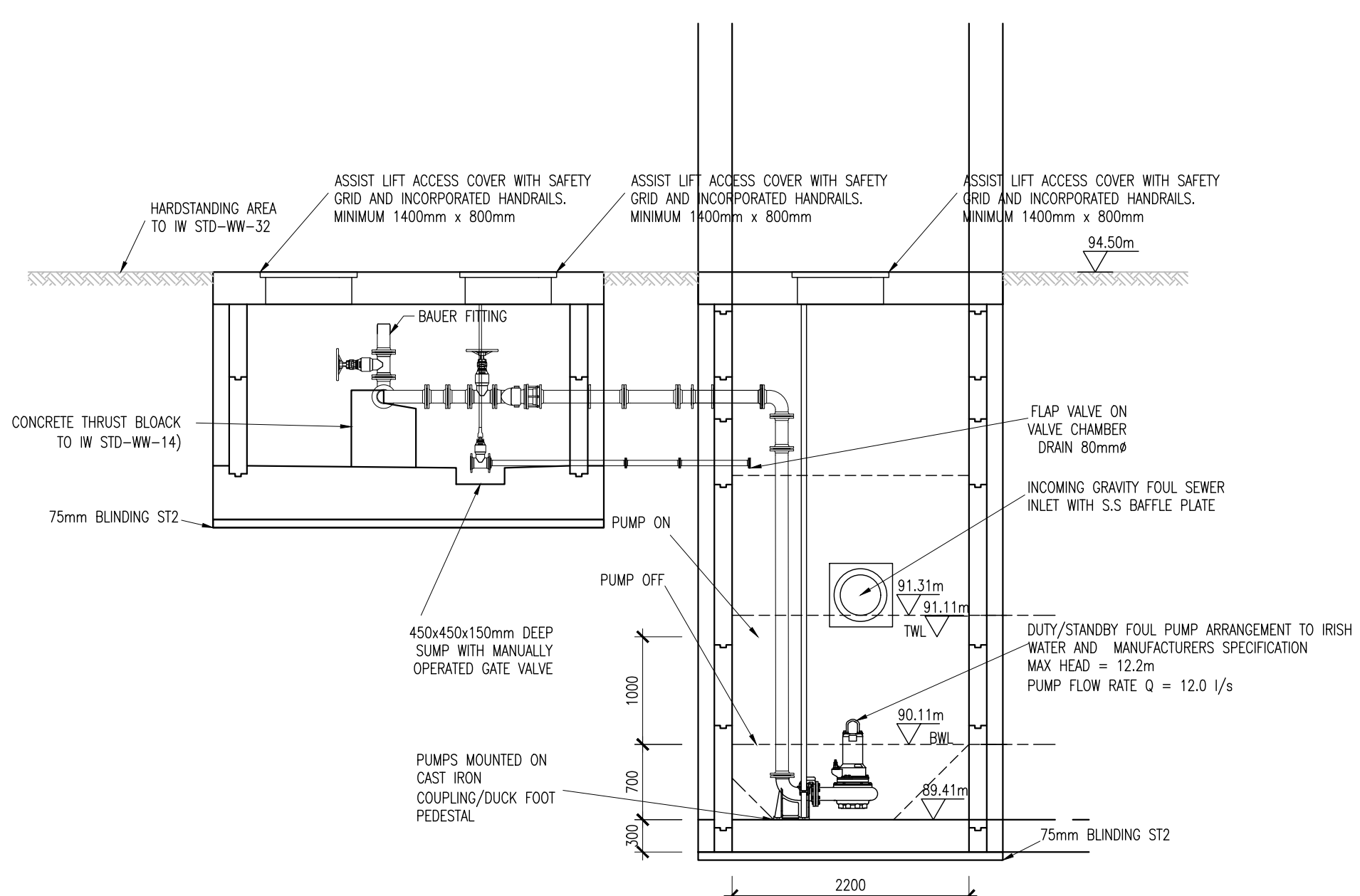
- DRAWING SPECIFIC NOTES:
- ALL WASTEWATER INFRASTRUCTURE ON THESE DRAWINGS HAS BEEN DEVELOPED IN ACCORDANCE WITH THE CURRENT REVISION OF THE IRISH WATER CODE OF PRACTICE FOR WASTEWATER INFRASTRUCTURE.
 - ALL WASTEWATER INFRASTRUCTURE ELEMENTS SHALL BE CONSTRUCTED IN ACCORDANCE WITH THE CURRENT REVISION OF THE IRISH WATER CODE OF PRACTICE FOR WASTEWATER INFRASTRUCTURE STANDARD DETAILS AND SPECIFICATION.
 - FOUL PUMPING STATION TO COMPLY WITH IRISH WATER CODE OF PRACTICE FOR WASTEWATER INFRASTRUCTURE.
 - PUMPS TO BE INSTALLED TO MANUFACTURERS DETAILS & SPECIFICATION.
 - PUMP MANUFACTURER TO SUPPLY DETAILS OF STANDARD ANNUAL MAINTENANCE FOR PUMPS.
 - PUMP MANUFACTURER TO SUPPLY DETAILS OF RECOMMENDED SPARE PARTS FOR 25 YEARS OPERATION.
 - PUMPING FACILITY TO BE SUITABLY LANDSCAPED TO ARCHITECTS DETAILS.
 - GALVANISED STEEL ACCESS COVER TO BE PROVIDED ON ALL CHAMBERS WITH NON-SLIP SURFACE. ALL ACCESS COVERS TO BE HINGED AND LIFT ASSISTED. ALL COVERS TO BE LOCKABLE. CHAMBER COVERS TO COMPLY WITH BS EN 124.
 - DAVITS & SOCKETS TO BE GALVANISED.
 - LIFTING DAVITS, TACKLE AND SOCKETS SHOULD BE RATED TO LIFT TWICE THE WEIGHT OF EACH PUMP UNIT WITH A MINIMUM RATING OF 500kg SAFE WORKING LOAD.
 - ALL METAL EQUIPMENT ON THE PUMP STATION SITE TO BE BONDED TO EARTH. EARTH ROD WITH INSPECTION PIT TO BE INSTALLED.
 - MINIMUM PUMP CUT-OUT LEVEL TO BE ABOVE THE TOP OF THE PUMP MOTORS.
 - LEVEL DETECTION TO BE ULTRASONIC AND HAVE SUITABLE CONNECTIONS TO STANDARD LOGGERS/SCADA SYSTEMS.
 - VENT STACKS TO BE FITTED WITH ANTI-BIRD COWLS.
 - CONTINUOUS CONCRETE FOOTPATH TO BE PROVIDED AROUND KIOSKS AND PUMP STATION.
 - ALL DUCTING FROM PUMP CHAMBER TO BE SEALED AIRTIGHT.
 - ELECTRICAL REQUIREMENTS TO MEET IRISH WATER CODE OF PRACTICE FOR WASTEWATER.
 - TELEMETRY TO BE PROVIDED FOR PUMPING STATION TO MEET IRISH WATER REQUIREMENTS.
 - PUMPING STATION TO HAVE REMOTE/ALARM MONITORING TO MEET IRISH WATER REQUIREMENTS.
 - PUMPS TO BE DUTY/STANDBY SUBMERSIBLE SUITABLE FOR RAW, UNSCREENED DOMESTIC SEWAGE.
 - PUMPS TO BE MOUNTED ON A CAST IRON COUPLING/DUCK-FOOT PEDESTAL.
 - ALL PIPE WORK AND VALVES TO BE DUCTILE IRON TO IS EN 598 SUITABLE FOR USE WITH SEWERAGE WITH FN-16 FLANGES TO BS EN 1092-1.
 - VALVE CHAMBER TO INCLUDE FEMALE BAUER CONNECTION AND SLUICE VALVE ON A TEE FOR PUMPING DOWN THE PUMP STATION.
 - PUDDLE FLANGES TO BE USED TO ENSURE A SEAL BETWEEN PIPES AND IN-SITU CONCRETE WALL.
 - ALL IN-SITU CONCRETE TO BE C30/37 TO IS EN 206.



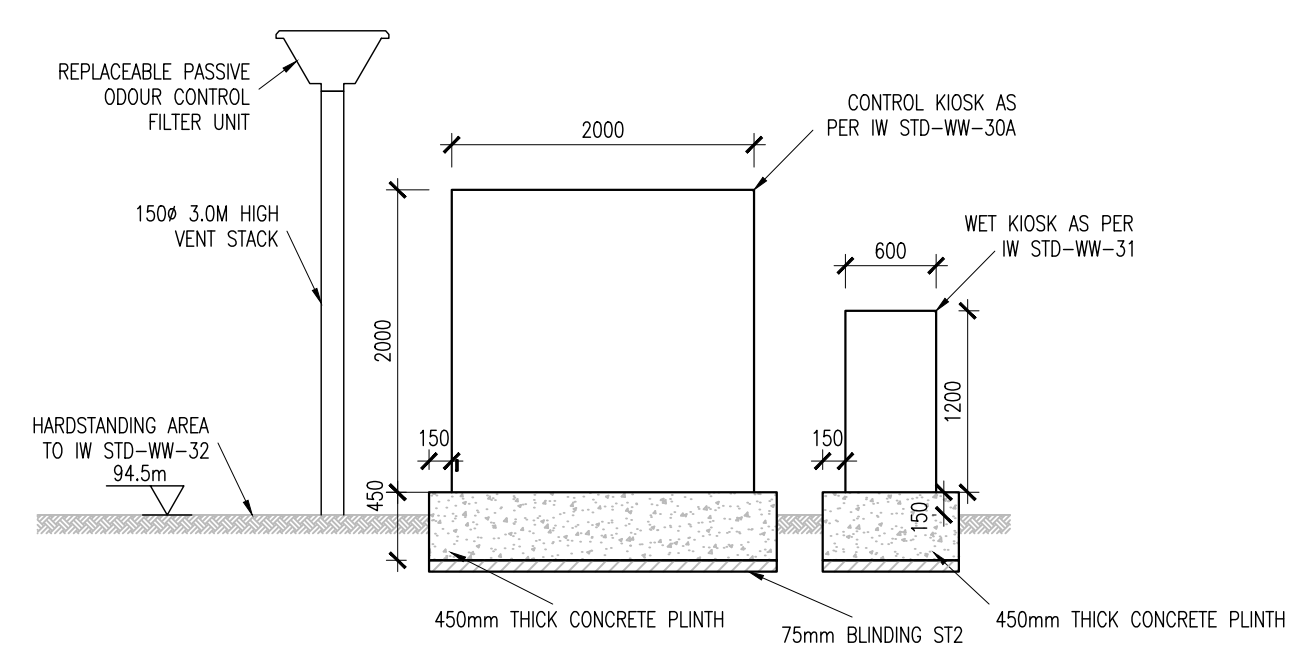
WET WELL/BALANCE TANK (BELOW GROUND) SECTION A - A
SCALE NTS



ABOVE GROUND FACILITIES FRONTAL VIEW C - C
SCALE 1:50



VALVE CHAMBER /WET WELL (BELOW GROUND) SECTION B - B
SCALE NTS



ABOVE GROUND FACILITIES REAR VIEW D - D
SCALE NTS

P02	13/06/22	STAGE 3 SHD	PJC	NCG
P01	02/11/21	STAGE 2 SHD	OWF	NCG
rev	date	description	by	chkd.
		A - Approved		
		B - Approved with comments		
		C - Do not use		

suitability S2 - INFORMATION issue purpose PLANNING



SUBURB OFFICE: Ormond House, Upper Ormond Quay, Dublin 7, D07 W704
PHONE: +353 1 406 4000
CORP OFFICE: 14 South Mall, Cork, T12 CT91
PHONE: +353 21 204538
WATERFORD OFFICE: Suite 10 The Arkun, Maritime Gate, Canada Street, Waterford, X91 WC28
PHONE: +353 51 309 600

project ref. NEWCASTLE SOUTH

drawing title FOUL PUMPING STATION DETAILS

client CAIRN HOMES PROPERTIES LTD

designed by	author	scale	sheet size
NCG	IC	AS SHOWN	A1
drawing no.	revision		
210026-DBFL-CS-SP-DR-C-5111	P02		

ORDNANCE SURVEY IRELAND LICENCE
No EN 0017922
© ORDNANCE SURVEY IRELAND GOVERNMENT OF IRELAND